



Institut  
National du  
Cancer

## SUBPROCESS

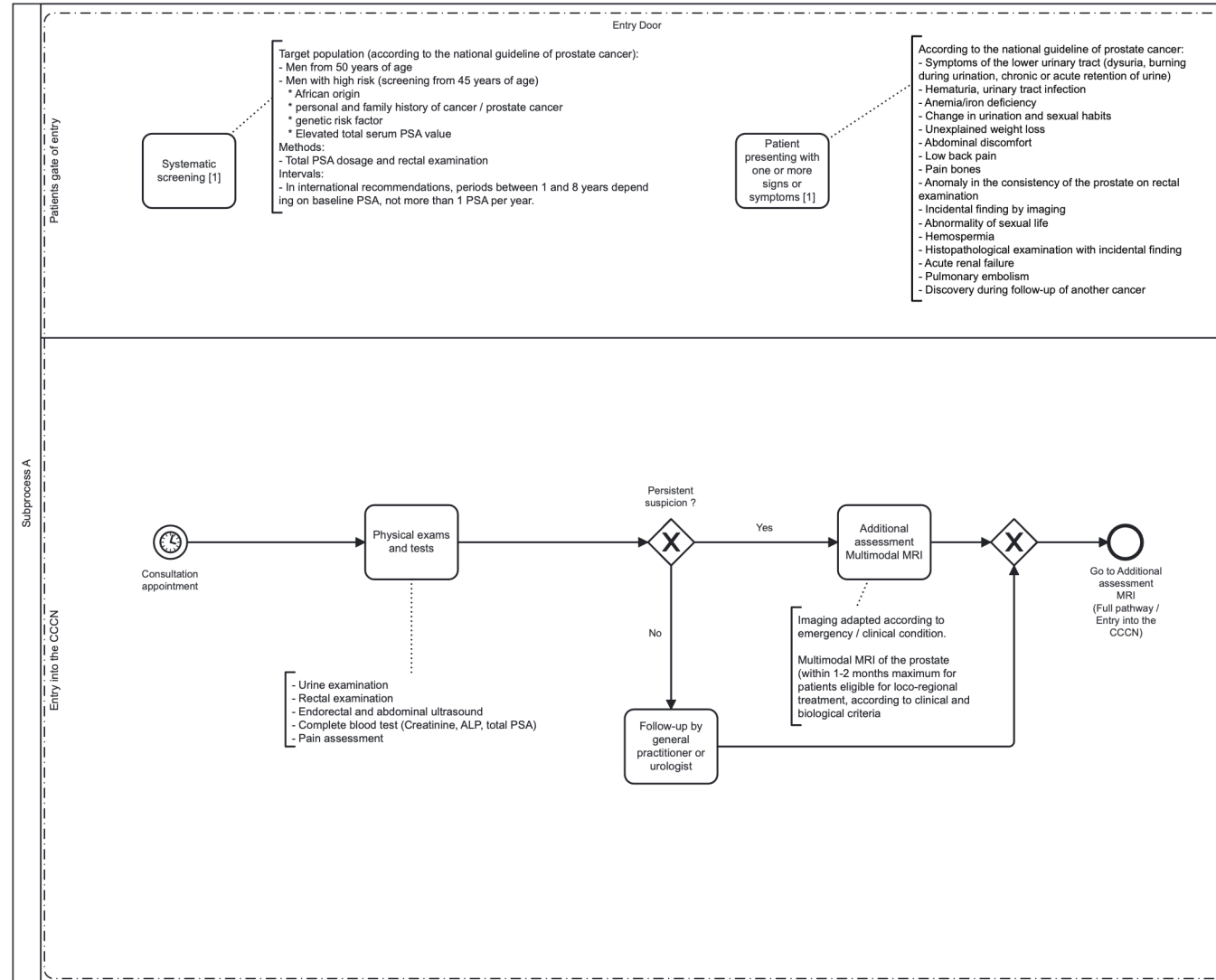
### STANDARDISED PATIENT PATHWAY FOR PROSTATE CANCER



PATIENT PATHWAY DEVELOPED BY THE WORKING GROUP OF THE  
NATIONAL CANCER INSTITUTE

VERSION 2  
27/07/2025

# Prostate Cancer – Subprocess A – Entry Door



The national care pathway for prostate cancer has been designed on the basis of the European model for colorectal cancer care, developed within the framework of the iPAAC Joint Action. <https://www.ipaac.eu/res/file/outputs/wp10/patient-pathway-template-crc.pdf>

## GLOSSARY

ALP	Alkaline Phosphatase
CCCN	Comprehensive Cancer Care Network
MRI	Magnetic Resonance Imaging
PSA	Prostate Specific Antigen

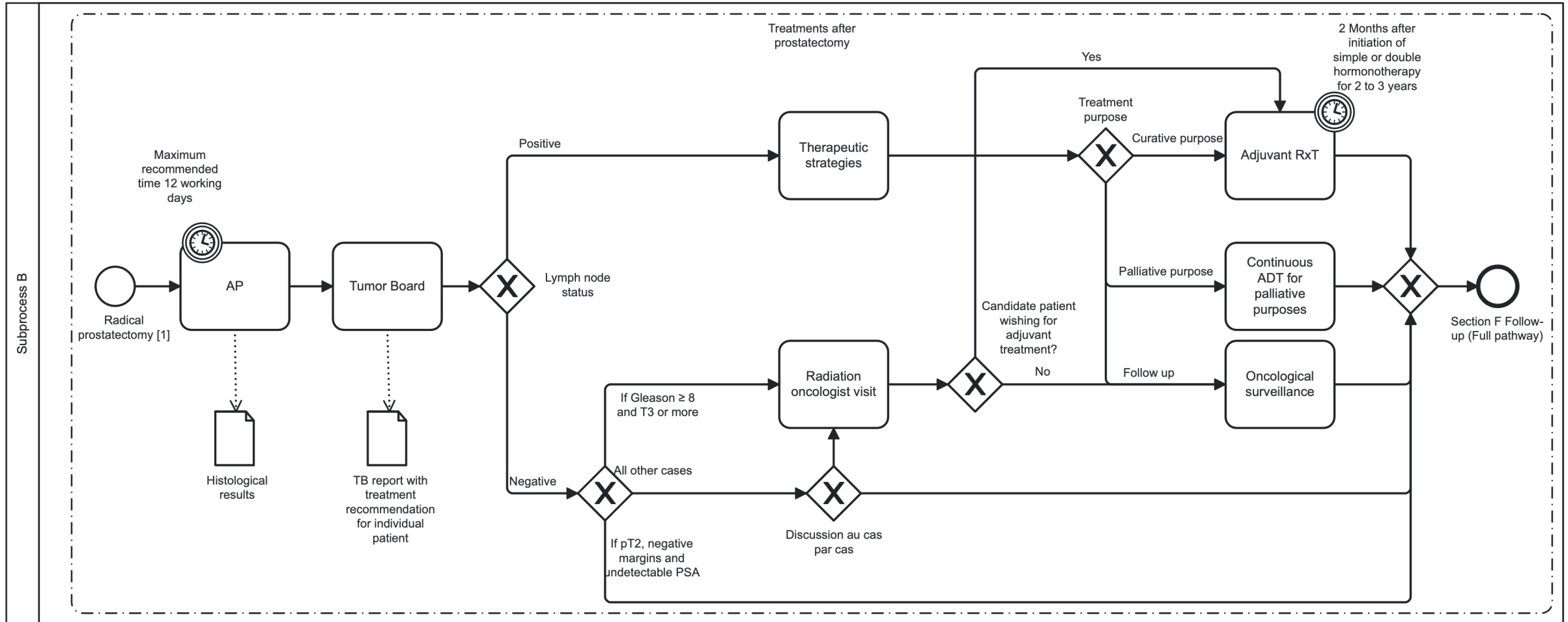
### 1. Stages & Actors

Stage	Actors involved
Entry Door	Biologist, Emergency physician, General practitioner, Geriatrician, Medical oncologist, Pathologist, Patient support groups, Radiologist/ Nuclear Medicine, Urologist, Work medicine

### 2. Reference

[1] National guideline for prostate cancer referring to international guidelines

The national care pathway for prostate cancer has been designed on the basis of the European model for colorectal cancer care, developed within the framework of the iPAAC Joint Action. <https://www.ipaac.eu/res/file/outputs/wp10/patient-pathway-template-crc.pdf>



The national care pathway for prostate cancer has been designed on the basis of the European model for colorectal cancer care, developed within the framework of the iPAAC Joint Action. <https://www.ipaac.eu/res/file/outputs/wp10/patient-pathway-template-crc.pdf>

## GLOSSARY

ADT	Androgen Deprivation Treatment
AP	Anatomo-pathology
PSA	Prostate Specific Antigen
RxT	Radiotherapy
T2	Tumour stage 2
T3	Tumour stage 3
TB	Tumour Board

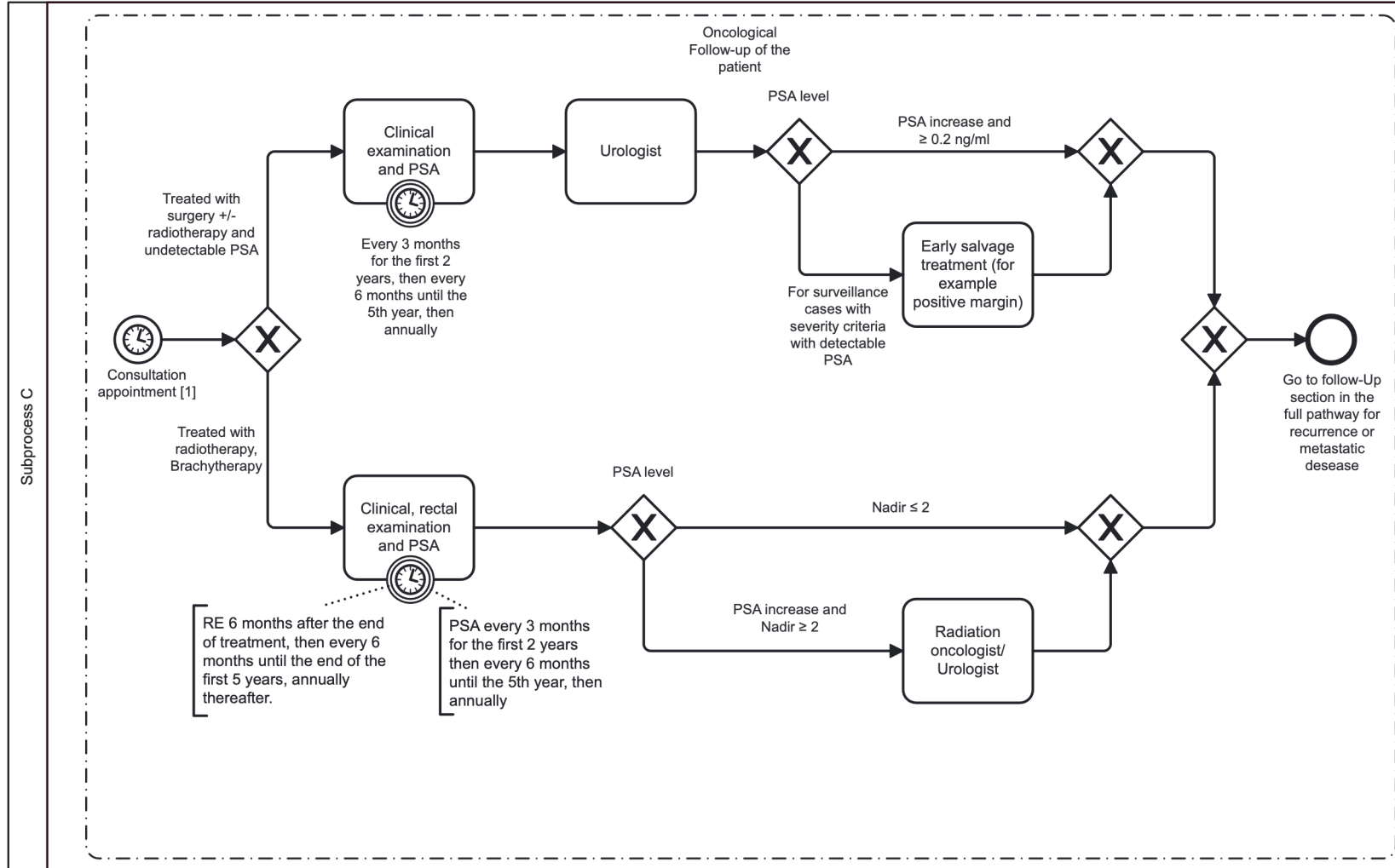
### 1. Stages & Actors

Stage	Actors involved
Treatments after prostatectomy	Anatomo-pathologist, ATM radiologie, Biologist, Case manager, General practitioner, Geriatrician, Hospital pharmacist, Medical oncologist, Nurse specialized in oncology, Patient support groups, Psychologist, Radiation oncologist, Radiologist/ Nuclear Medicine, Urologist

### 2. Reference

[1] National guideline for prostate cancer referring to international guidelines

The national care pathway for prostate cancer has been designed on the basis of the European model for colorectal cancer care, developed within the framework of the iPAAC Joint Action. <https://www.ipaac.eu/res/file/outputs/wp10/patient-pathway-template-crc.pdf>



The national care pathway for prostate cancer has been designed on the basis of the European model for colorectal cancer care, developed within the framework of the iPAAC Joint Action. <https://www.ipaac.eu/res/file/outputs/wp10/patient-pathway-template-crc.pdf>

## GLOSSARY

NADIR	PSA Nadir corresponds to the lowest PSA level reached during follow-up after treatment for prostate cancer
PSA	Prostate Specific Antigen
RE	Rectal Exam

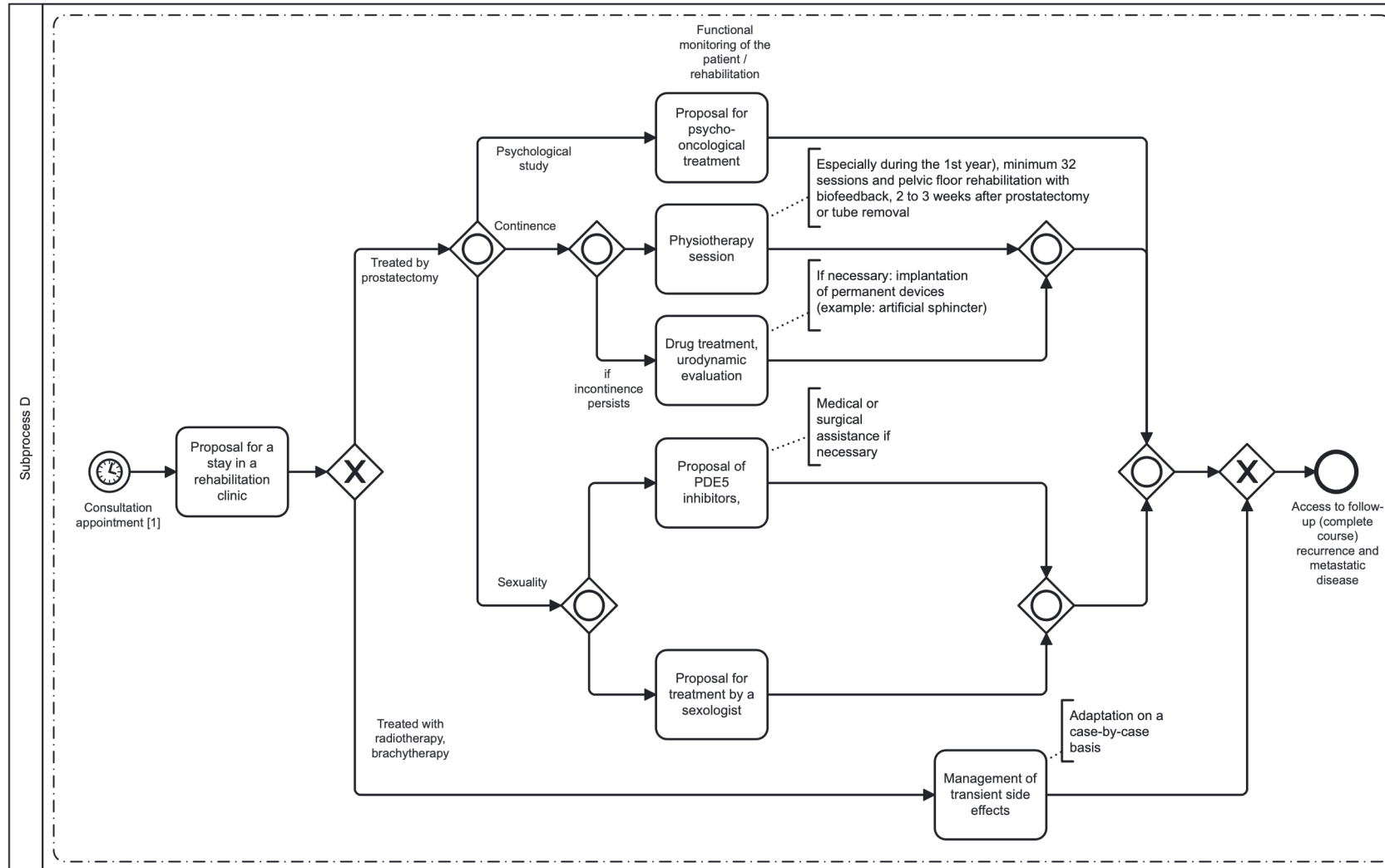
### 1. Stages & Actors

Stage	Actors involved
Oncological Follow-up of the patient	Biologist, General practitioner, Geriatrician, Medical oncologist, Patient support groups, Psychologist, Radiologist/ Nuclear Medicine, Radiotherapist, Urologist

### 2. Reference

[1] National guideline for prostate cancer referring to international guidelines

The national care pathway for prostate cancer has been designed on the basis of the European model for colorectal cancer care, developed within the framework of the iPAAC Joint Action. <https://www.ipaac.eu/res/file/outputs/wp10/patient-pathway-template-crc.pdf>



The national care pathway for prostate cancer has been designed on the basis of the European model for colorectal cancer care, developed within the framework of the iPAAC Joint Action. <https://www.ipaac.eu/res/file/outputs/wp10/patient-pathway-template-crc.pdf>

## GLOSSARY

PDE5	Phosphodiesterase type 5
------	--------------------------

### 1. Stages & Actors

Stage	Actors involved
Functional monitoring of the patient / rehabilitation	General practitioner, Medical oncologist, Patient support groups, Physiotherapist, Psychologist, Radiation oncologist, Rehabilitation center, Sexologist, Urologist

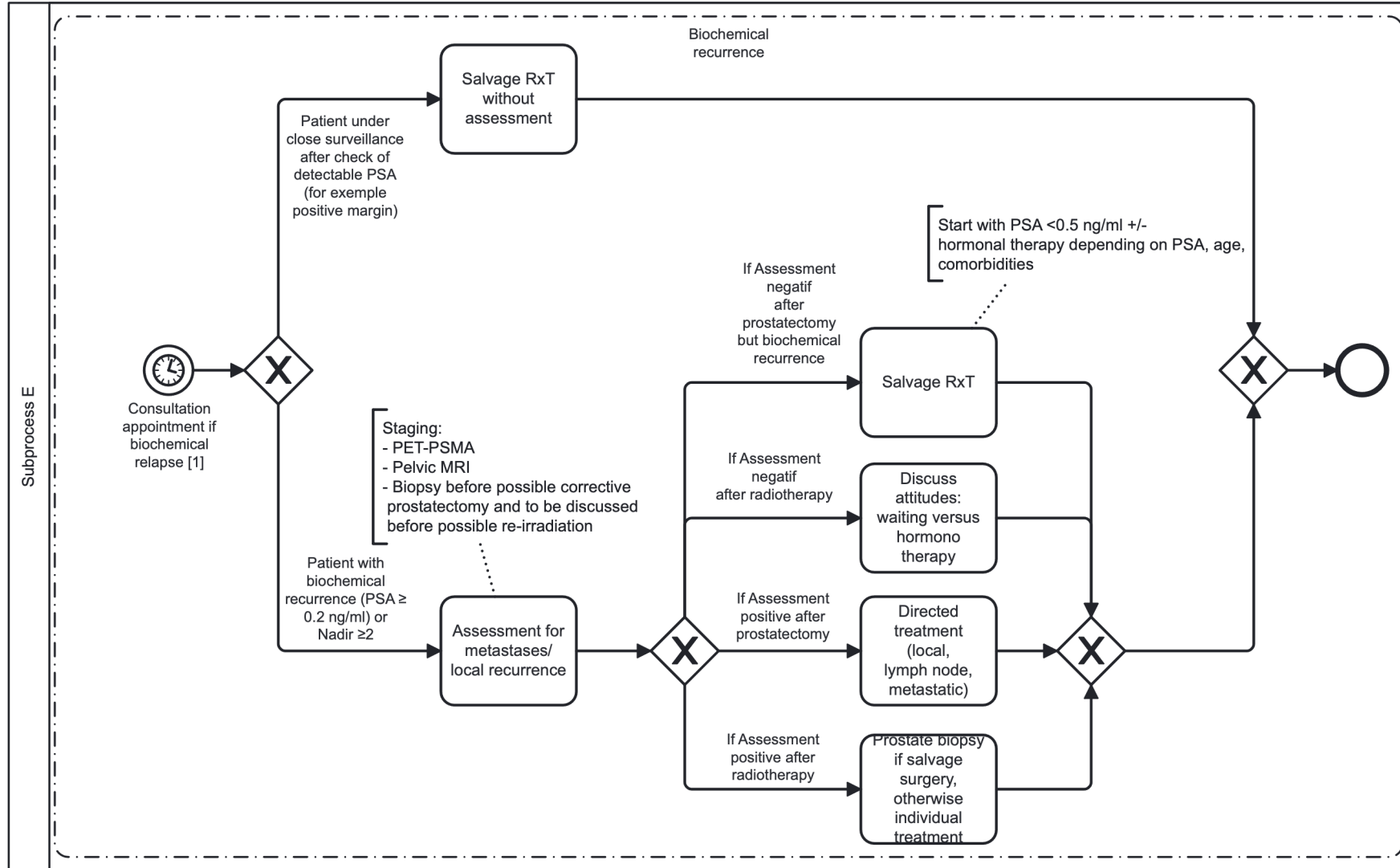
### 2. Reference

[1] National guideline for prostate cancer referring to international guidelines

The national care pathway for prostate cancer has been designed on the basis of the European model for colorectal cancer care, developed within the framework of the iPAAC Joint Action. <https://www.ipaac.eu/res/file/outputs/wp10/patient-pathway-template-crc.pdf>



# Prostate Cancer – Subprocess E – Biochemical recurrences



The national care pathway for prostate cancer has been designed on the basis of the European model for colorectal cancer care, developed within the framework of the iPAAC Joint Action. <https://www.ipaac.eu/res/file/outputs/wp10/patient-pathway-template-crc.pdf>

## GLOSSARY

MRI	Magnetic Resonance Imaging
NADIR	PSA Nadir corresponds to the lowest PSA level reached during follow-up after treatment for prostate cancer
PET-PSMA	Positron Emission Tomography-Prostate specific membrane antigen
PSA	Prostate Specific Antigen
RxT	Radiotherapy

### 1. Stages & Actors

Stage	Actors involved
Biochemical recurrence	Biologist, Case manager, General practitioner, Geriatrician, Medical oncologist, Nuclear medicine, Nurse specialized in oncology, Pathologist, Psychologist, Radiation oncologist, Radiologist/ Nuclear Medicine, Urologist

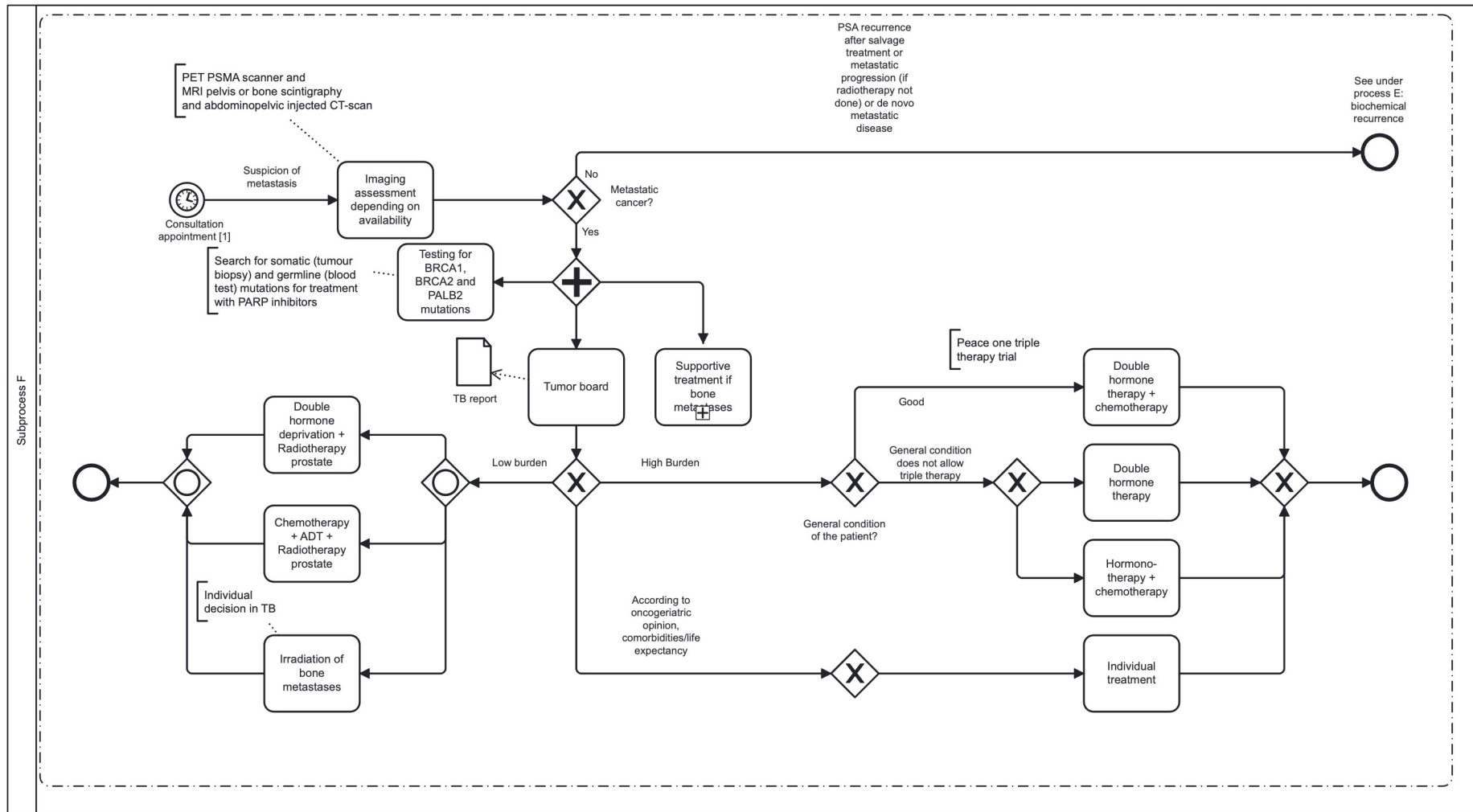
### 2. Reference

[1] National guideline for prostate cancer referring to international guidelines

The national care pathway for prostate cancer has been designed on the basis of the European model for colorectal cancer care, developed within the framework of the iPAAC Joint Action. <https://www.ipaac.eu/res/file/outputs/wp10/patient-pathway-template-crc.pdf>



# Prostate Cancer – Subprocess F – PSA recurrence / Metastatic progression / de novo metastatic disease



The national care pathway for prostate cancer has been designed on the basis of the European model for colorectal cancer care, developed within the framework of the iPAAC Joint Action. <https://www.ipaac.eu/res/file/outputs/wp10/patient-pathway-template-crc.pdf>

## GLOSSARY

ADT	Androgen Deprivation Treatment
BRCA1/BRCA2	Breast Cancer 1 / Breast Cancer 2
CT	Computed Tomography
MRI	Magnetic Resonance Imaging
PALB2	Partner and Localizer of BRCA2
PARP	Poly (ADP-ribose) polymerase
PET-PSMA	Positron Emission Tomography-Prostate specific membrane antigen
PSA	Prostate Specific Antigen
TB	Tumor Board

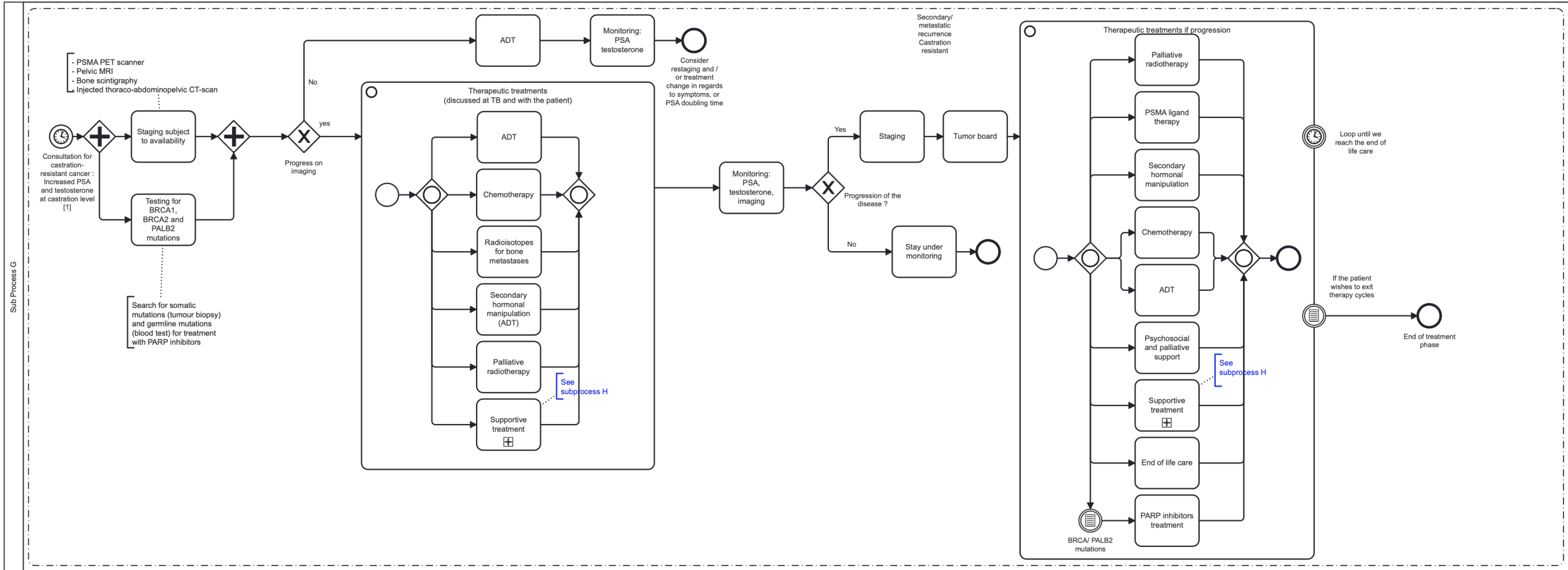
### 1. Stages & Actors

Stage	Actors involved
PSA recurrence after salvage treatment or metastatic progression (if radiotherapy not done) or de novo metastatic disease	Biologist, Case manager, General practitioner, Geriatrician, Hospital pharmacist, Medical oncologist, Nuclear medicine, Nurse specialized in oncology, Onco-geriatrician, Patient support groups, Psychologist, Radiologist/ Nuclear Medicine, Radiotherapist, Urologist

### 2. Reference

[1] National guideline for prostate cancer referring to international guidelines

The national care pathway for prostate cancer has been designed on the basis of the European model for colorectal cancer care, developed within the framework of the iPAAC Joint Action. <https://www.ipaac.eu/res/file/outputs/wp10/patient-pathway-template-crc.pdf>



The national care pathway for prostate cancer has been designed on the basis of the European model for colorectal cancer care, developed within the framework of the iPAAC Joint Action. <https://www.ipaac.eu/res/file/outputs/wp10/patient-pathway-template-crc.pdf>

## GLOSSARY

ADT	Androgen Deprivation Treatment
BRCA1/BRCA2	Breast Cancer 1 / Breast Cancer 2
CRPC	Castration Resistant Prostate Cancer
CT	Computed Tomography
MRI	Magnetic Resonance Imaging
PALB2	Partner and Localizer of BRCA2
PARP	Poly (ADP-ribose) polymerase
PET-PSMA	Positron Emission Tomography-Prostate specific membrane antigen
PSA	Prostate Specific Antigen

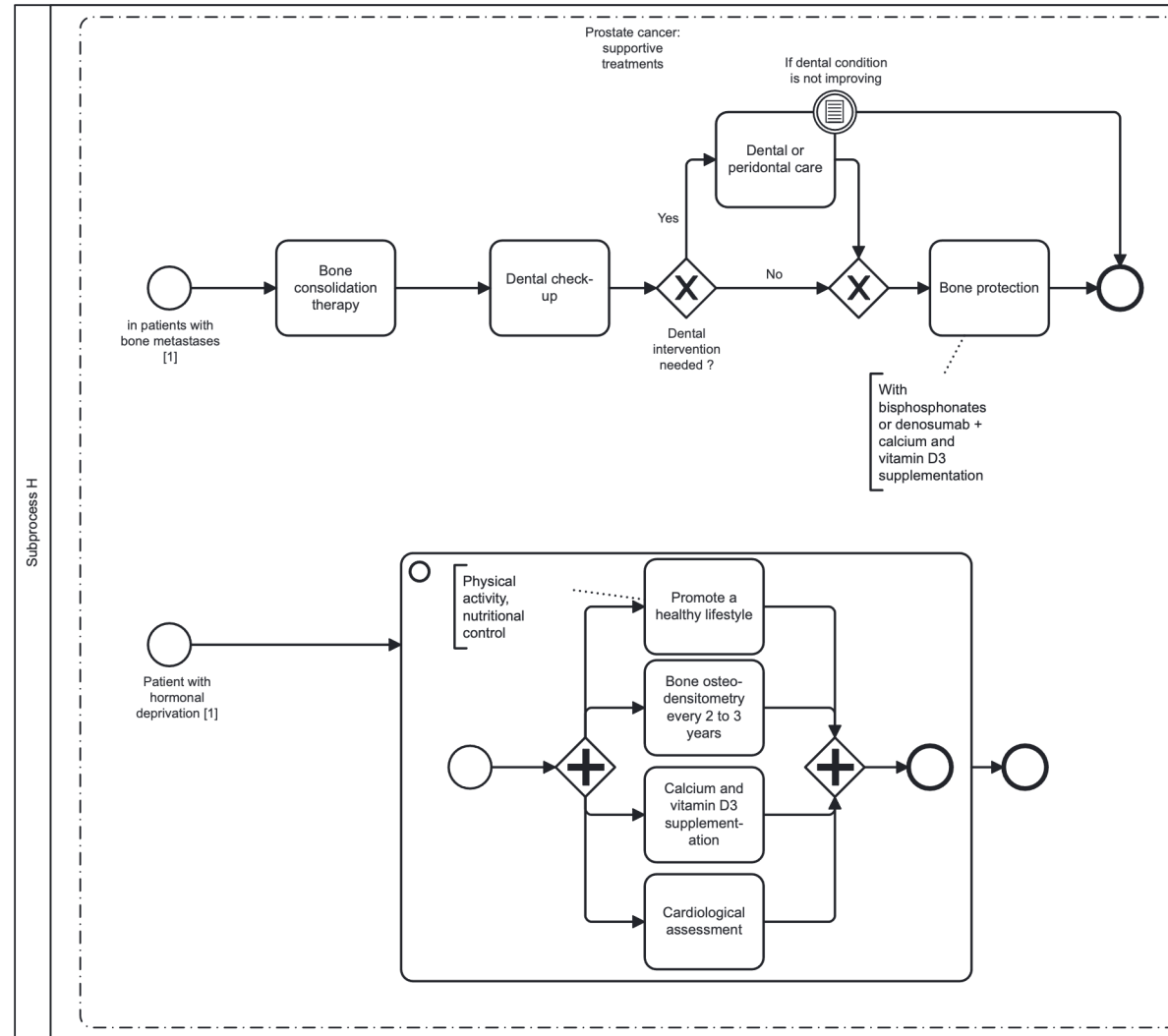
### 1. Stages & Actors

Stage	Actors involved
Secondary/ metastatic recurrence Castration resistant	Anatomo-pathologist, Biologist, Case manager, General practitioner, Geriatrician, Hospital pharmacist, Medical oncologist, Molecular geneticist/ oncology genetic counselling, MTA radiology, Nuclear medicine, Nurse specialized in oncology, Pain management team, Palliative care team, Psychologist, Radiation oncologist, Radiologist/ Nuclear Medicine, Rheumatologist, Social worker, Urologist

### 2. Reference

[1] National guideline for prostate cancer referring to international guidelines

The national care pathway for prostate cancer has been designed on the basis of the European model for colorectal cancer care, developed within the framework of the iPAAC Joint Action. <https://www.ipaac.eu/res/file/outputs/wp10/patient-pathway-template-crc.pdf>



The national care pathway for prostate cancer has been designed on the basis of the European model for colorectal cancer care, developed within the framework of the iPAAC Joint Action. <https://www.ipaac.eu/res/file/outputs/wp10/patient-pathway-template-crc.pdf>

## 1. Stages & Actors

Stage	Actors involved
Prostate cancer: supportive treatments	Anatomo-pathologist, Biologist, Cardiologist, Case manager, Dentist, Foundations, General practitioner, Geriatrician, Hospital pharmacist, Medical oncologist, Molecular geneticist/ oncology genetic counselling, Nuclear medicine, Nurse specialized in oncology, Onco-geriatrician, Pain management team, Palliative care team, Psychologist, Radiation oncologist, Radiologist/ Nuclear Medicine, Rheumatologist, Social worker, Urologist

## 2. Reference

[1] National guideline for prostate cancer referring to international guidelines

The national care pathway for prostate cancer has been designed on the basis of the European model for colorectal cancer care, developed within the framework of the iPAAC Joint Action. <https://www.ipaac.eu/res/file/outputs/wp10/patient-pathway-template-crc.pdf>